

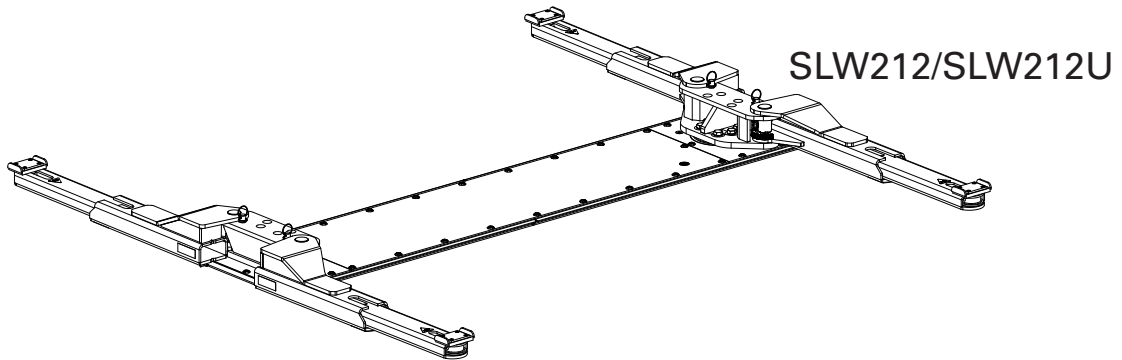
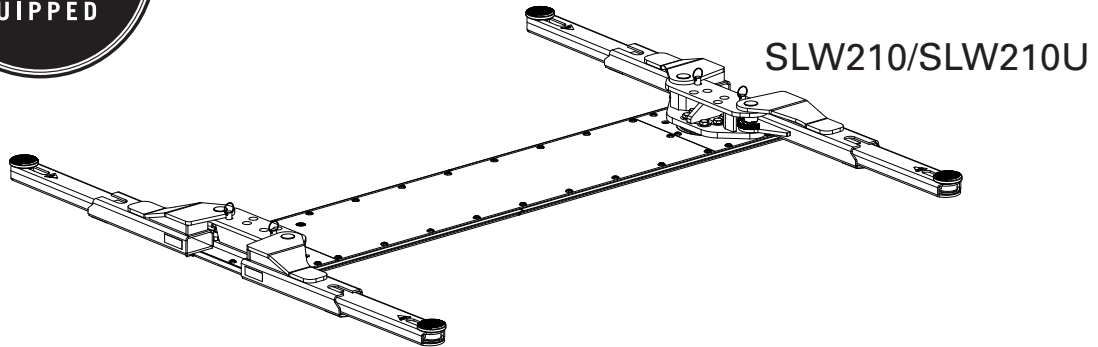


SLW210/SLW210U  
 SLW212/SLW212U  
 Conventional and Work Bench  
 Shockwave Controls

(000 Series)

SLW210/SLW210U Capacity 10,000 lbs.

SLW212/SLW212U Capacity 12,000 lbs.



P  
A  
R  
T  
S  
  
B  
R  
E  
A  
K  
D  
O  
W  
N

**IMPORTANT:** When ordering parts or requesting service always give exact model and power unit serial number. Model number is shown on nameplate attached to air lock release valve. Power unit serial number is located on side of power unit.

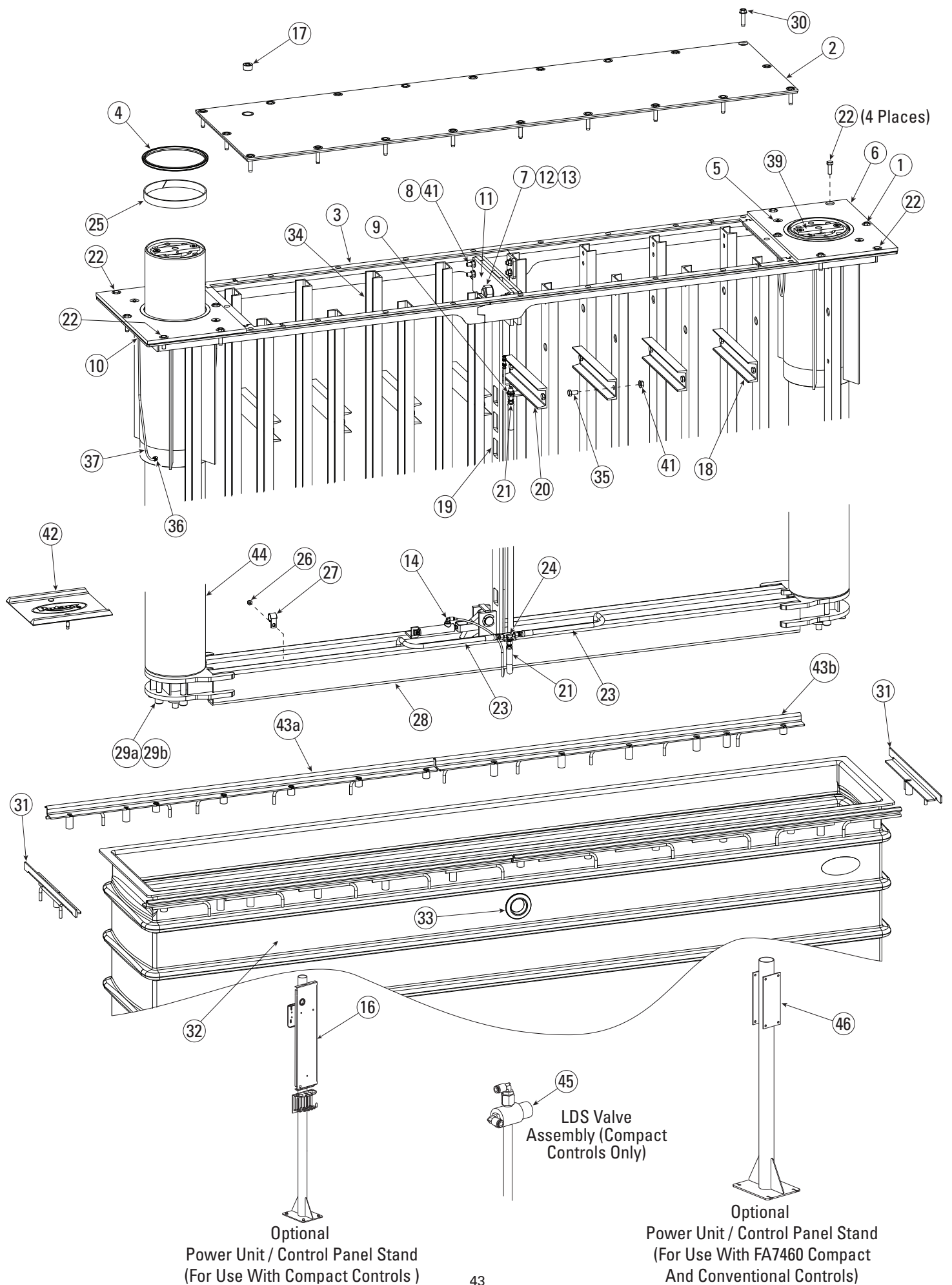
**OWNERS RECORD**  
 Complete information at right and keep in a safe place.

Date Installed \_\_\_\_\_  
 Installed in Bay # \_\_\_\_\_  
 Power Unit Serial # \_\_\_\_\_  
 Power Unit Model # \_\_\_\_\_  
 Lift Serial # \_\_\_\_\_  
 Lift Model # \_\_\_\_\_

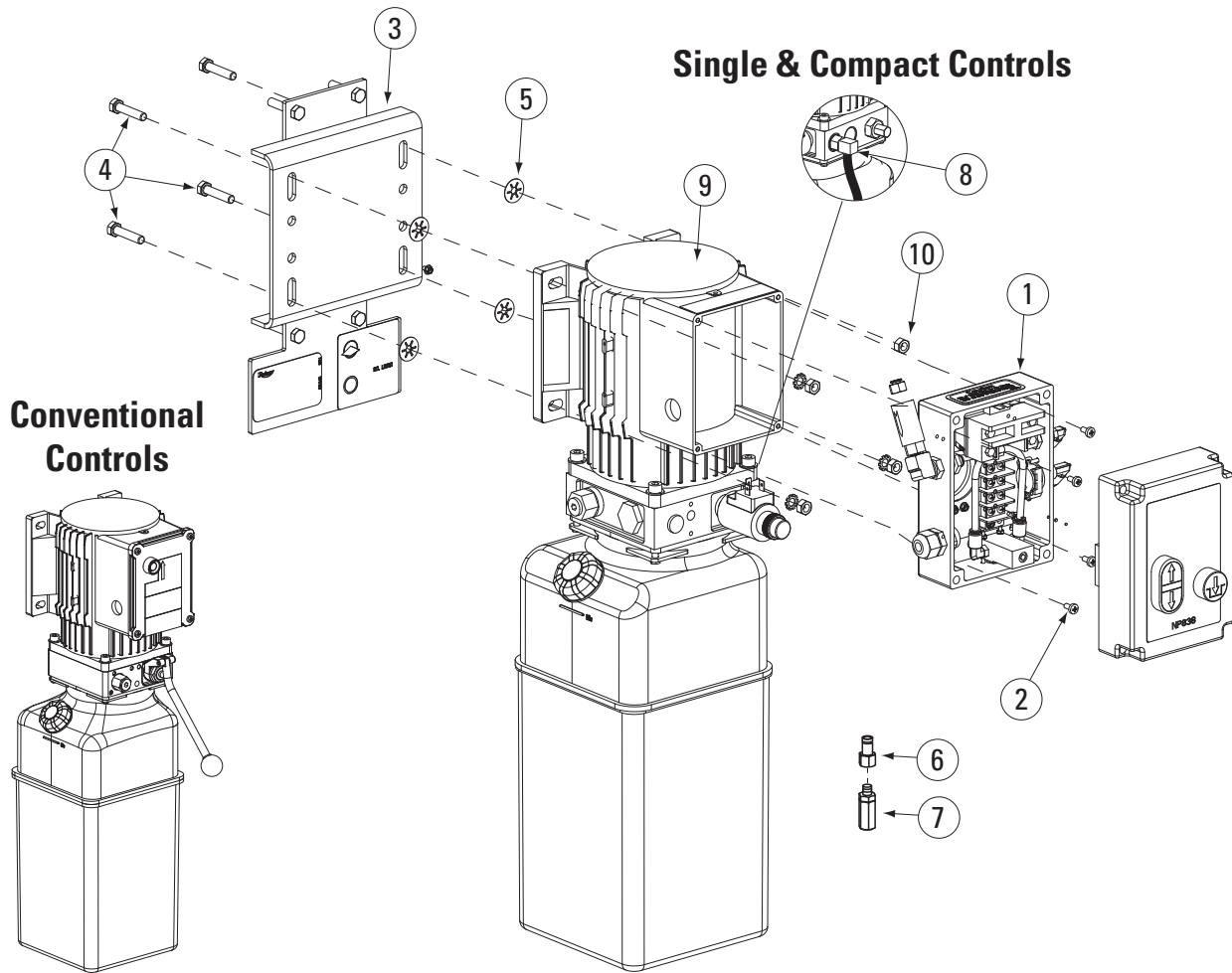
NOTE: For replacement parts - See your nearest Rotary Parts Distributor.

## MAIN LIFT EXPLODED DETAIL

1	1/2"-13NC x 2" SelfTap Screw, Plated	40268
2	Wide Cover Plate	T120345
3	Multi-Piece Gasket for Wide SL	T140280W
4	Wiper Seal	T140118
5	Zerk Fitting L#5000 1/8" Pipe	T140007
6	Guide Barrel Assembly	T110175
7	1-1/8"-7NC x 3" HHCS, Gr. 5, Plated	40606
8	1/2"-13NC x 2-3/4" HHCS, Gr. 5	40341
9	9/16" Internal Tooth Lockwasher, Plated	40998
10	Male Connector for Nylon Tube	FC5225-47
11	Latch Bar Plate	T130342
12	1-1/8" Int. Tooth Lockwasher, Plated	40608
13	1-1/8"-7NC Hex Nut, Plated	40607
14	1/4" NPT x 1/4" Push Fit Swivel Elbow	FC5341-90
15	NA	NA
16	Stand Assembly	T110165
17	1 CSK Pipe Plug	12011
18	Tie Channel	T130345
19	Latch Bar	T130341
20	Hose Bracket Assembly	T120158
21	Vertical Hose Total Assembly	T140274
22	1/2"-13NC x 1-1/2" Lg. HHCS	40302
23	Plunger Hose	T140276
24	Union Tee Fitting	T140273
25	Bearing	T140148
26	5/16"-18NC Flanged Whizlock Nut	40678
27	Hose Clip	T140247
28	Equalizer	T110651
29a	5/8"-11NC x 6" Lg. SHCS, Plunger to Equalizer Bolt	40458
29b	5/8" Lockwasher Plated, Plunger to Equalizer	41000
30	1/2"-13NC Self-Tap Bolt Gr5	40268
31	End Anchoring Frame	T120285
32	Wide Containment	T140278
33	2" Uniseal	T140023
34	Half Wide Frame Weldment	T120336
35	1/2"-13NC x 1" HHCS, Gr. 5	40261
36	Guide Barrel Fitting	FC5191-6
37	1/4" Nylon Tube (26" long)	T140213
38	NA	NA
39	Cylinder Lifting Bar	T130769
40	1/2"-13NC x 1-1/4" Countersunk SHCS	40337
41	1/2"-13NC Hex Flanged Whizlock Nut	40704
42	Wheel Spotting Dish Kit	FF729
43a	Wide Side Anchoring Weldment "A"	T120342
43b	Wide Side Anchoring Weldment "B"	T120343
44	Plunger	T120161
45	LDS Valve Assembly Replacement Kit	T100142
46	Stand Assembly Compact and Conventional	T120280

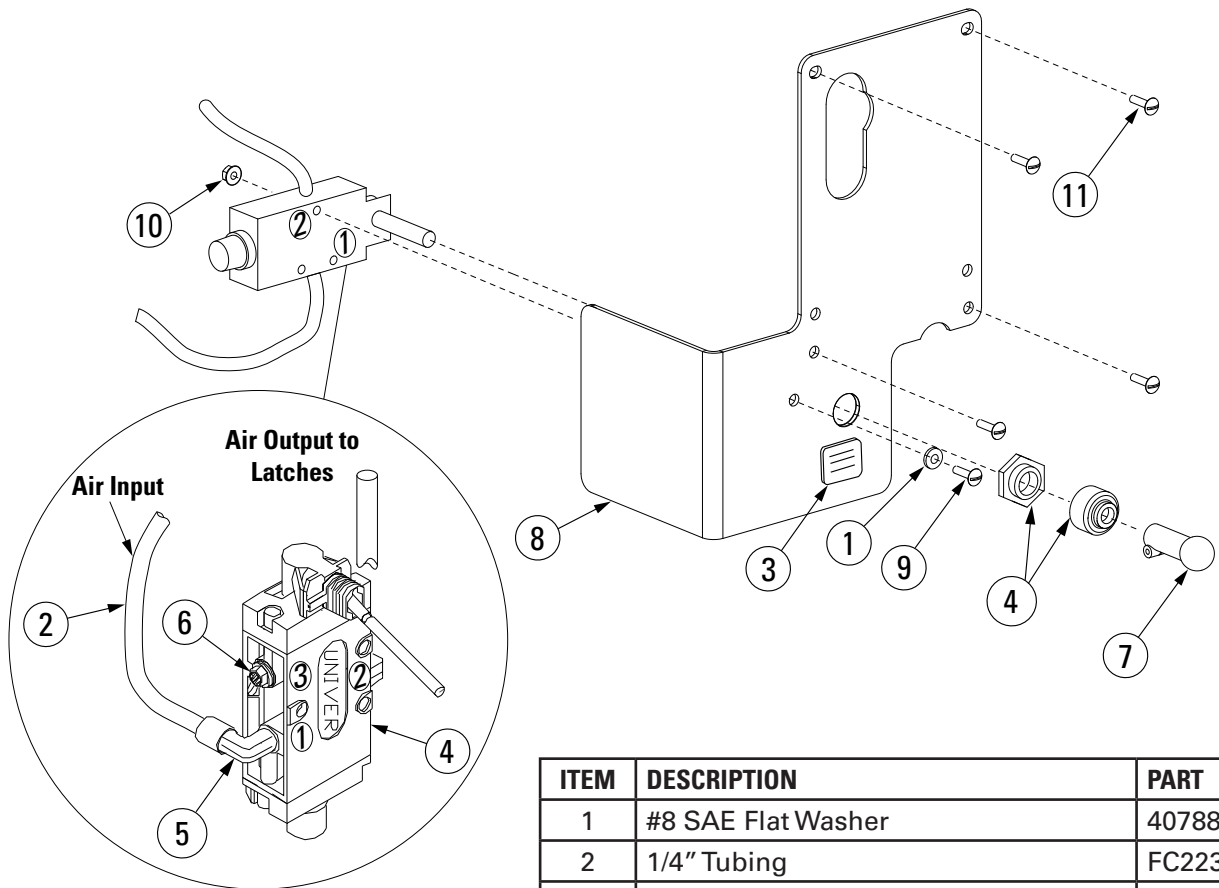


# POWER UNIT DETAIL



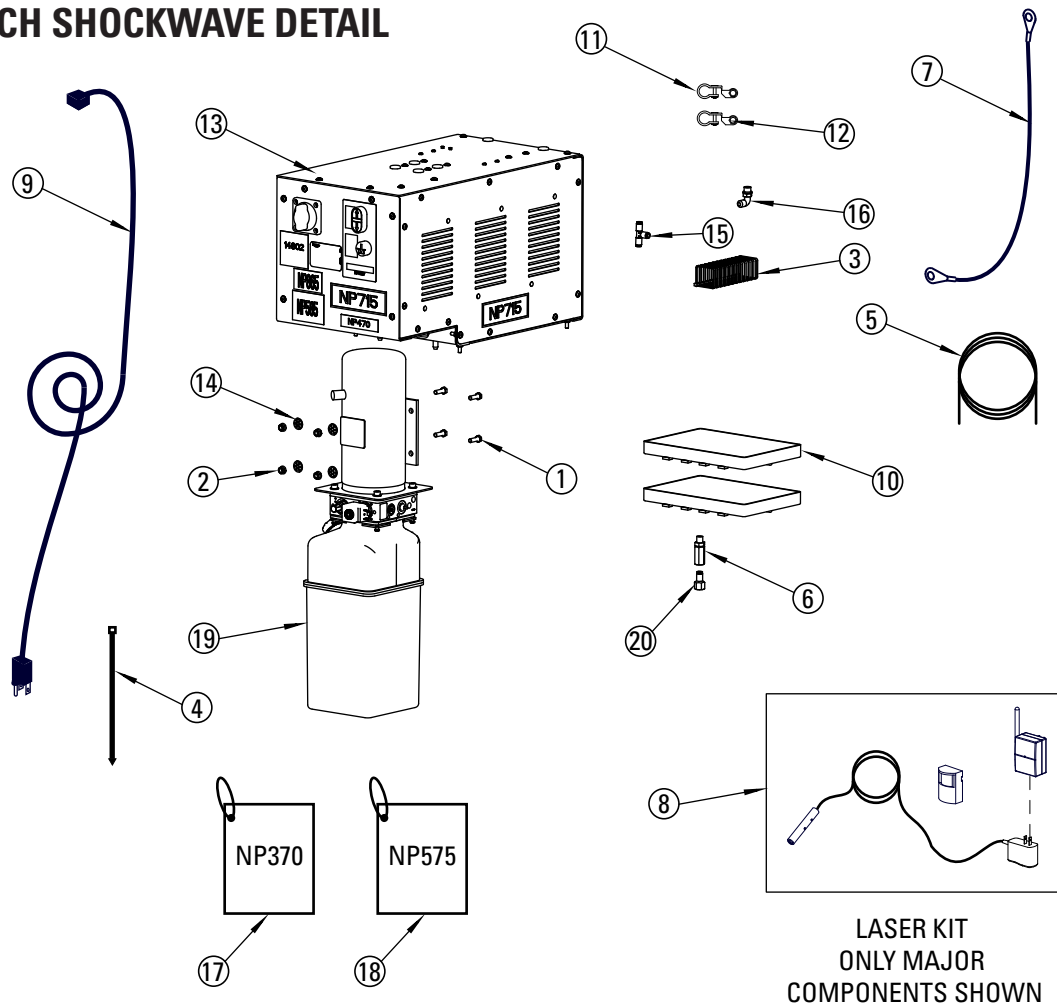
1	Master Control Panel (Compact)	FA7460
2	M5x10 PHMS, Plated	40275
3	Power Unit Wall Bracket	T120020
4	5/16"-18NC x 1-1/2" Flanged HHCS Zinc Plated	40509
5	5/16" Push Nut	FC5209
6	1/4" Push-In 1/4" NPT Female Fitting	T140081
7	Filter	FA3134-12
8	Elbow	FJ7224
9	SLW210 Power Unit Single Phase	P3350
	SLW210 Power Unit Single Phase (Compact Controls)	P3512
	SLW212 Power Unit Single Phase	P3302
	SLW212 Power Unit Single Phase (Compact Controls)	P3514
10	5/16"-18NC Flanged Hex Nut	40678

## CONVENTIONAL CONTROLS AIR LOWERING VALVE DETAIL

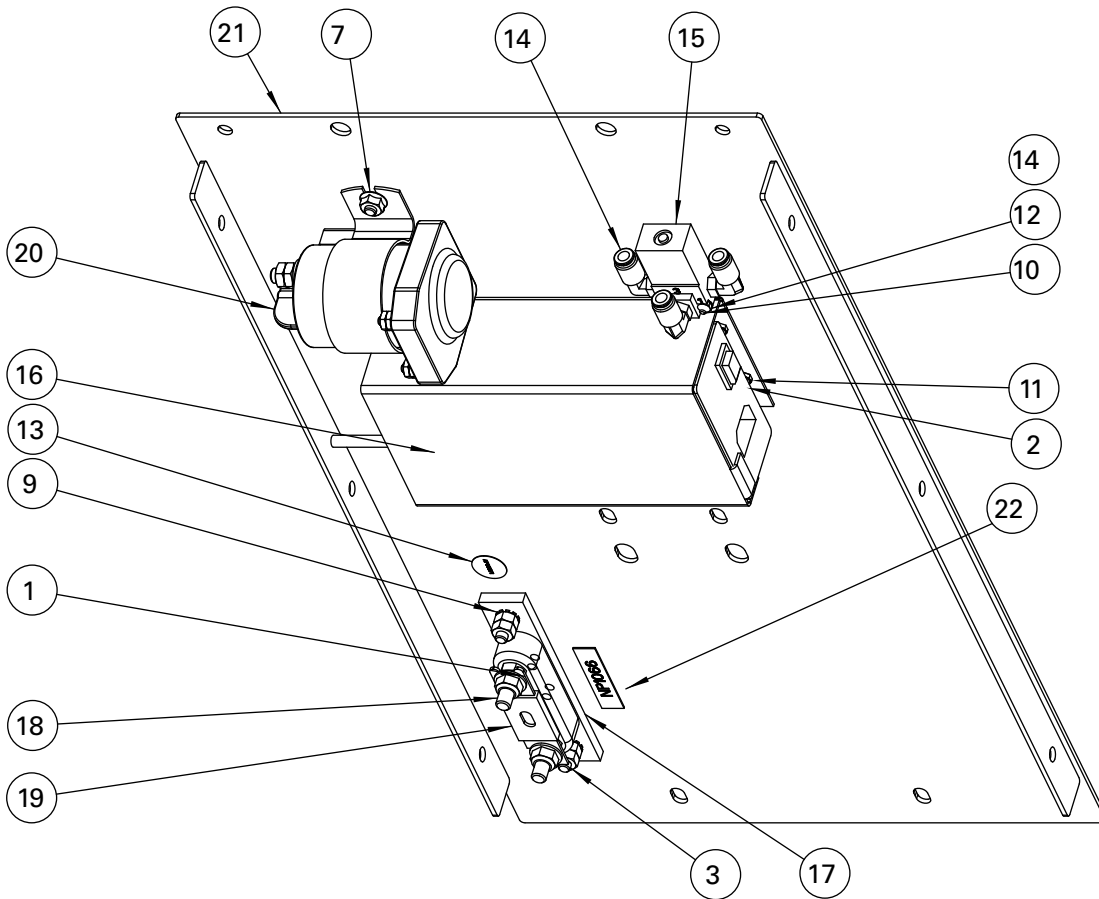


ITEM	DESCRIPTION	PART
1	#8 SAE Flat Washer	40788
2	1/4" Tubing	FC2230-2
3	Nameplate	NP280
4	Air Lock Valve	T140073
5	Swivel Elbow	T140074
6	Filter/Muffler	T140075
7	Air Lock Handle	T140119
8	Control Bracket 1Ø	S110274
9	#8-32NC x 1-1/2" PHMS	40007
10	#8-32NC Nylon Locknut	40649
11	M5 x 15 PHMS 1Ø	40277

# WORKBENCH SHOCKWAVE DETAIL

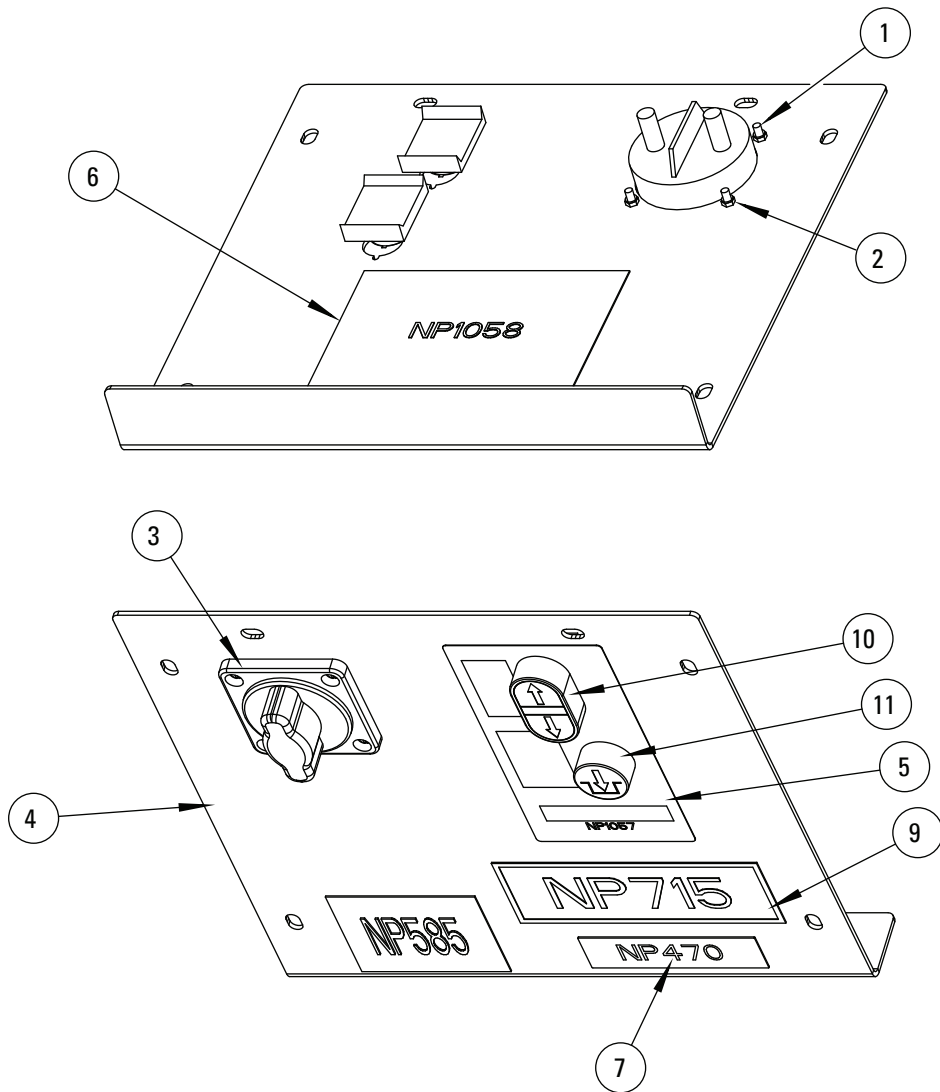


ITEM	QTY	PART NO.	DESCRIPTION
1	4	40400	5/16"-18NC x 1" Lg FLGD WZLOCK HHCS PL
2	4	40678	5/16"-18NC HEX FLGD WZLOCK NUT, PLTD
3	12	629888	TY-RAP CABLE TIE, NYLON, BLACK, 11 1
4	1	B084	WIRE TIE, RED
5	1	FA2230-2	TUBE 1/4" X 50' #PPB-43
6	1	FA3134-12	FILTER
7	1	FA7616	BATTERY-BATTERY CABLE
8	1	FA7814	LASER KIT
9	1	FA966-51	10FT UNIVERSAL POWER CORD (NEMA 5-15P TO IEC60320 C-13)
10	2	FA966-61	BATTERY TRAY
11	1	FA979	POSITIVE BATTERY TERMINAL END
12	1	FA981	NEGATIVE BATTERY TERMINAL END
13a	1	FA987	SMART LIFT DC WORKBENCH CONTROL ASSEMBLY
13b	1	FA9136	SMART LIFT DC WORKBENCH CONTROL ASSEMBLY W/O LASER
14	4	FC5209	5/16 PUSHNUT PALNUT #PV312015
15	1	FC5225-46	UNION TEE
16	1	FJ7224	ELBOW ADAPTER
17	1	NP370	PLACARD W/BLACK PLASTIC TIE (ALI/WL500w)
18	1	NP574	SL210 OPERATING INSTRUCTION PLACARD W/PLASTIC TIE
19	1	P3584	DC POWER UNIT SL210
		P3594	DC POWER UNIT SL212
20	1	T140081	FEMALE CONNECTOR



CABINETTOP SUB-ASSEMBLY

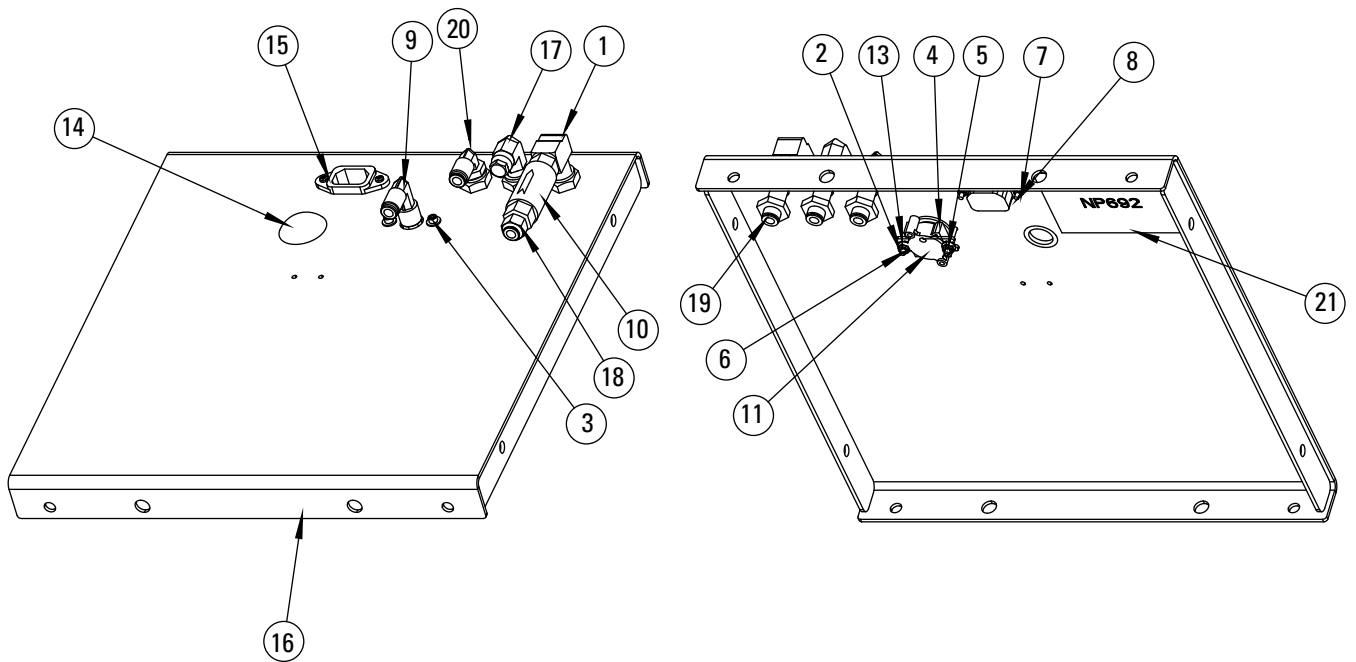
ITEM	QTY	PART NO.	DESCRIPTION
1	2	40004	#10-24 x 5/8 PFMMS, McMASTWR-CARR # 90471A315 or EQUAL
2	4	40022	#8-32NC x 1/2" Lg. SLOTTED PHMS, PLTD
3	2	40077	1/4"-20NC x 1" Lg FLGD HEX SOC BHCS, GRD2
4	2	40094	1/4"-20NC x 1/2" Lg FLGD HEX SOC BHCS
5	4	40625	1/4"-20NC HEX NUT, PLTD
6	4	40631	#10-32NC HEX NUT, PLTD
7	2	40641	1/4"-20NC HEX FLGD WZLOCK NUT, PLTD
8	4	40672	5/16"-24NC HEX JAM NUT
9	4	40779	1/4" EXTTOOTH LW
10	2	41475	#6-32NC x 1" Lg. HEX SHCS
11	4	450957	#8-32 NYLON LOCKNUT
12	2	706804	#6-32 UNC HEX NUT KEPS
13	1	AP00971	GROUND LABEL (GRN)
14	3	FA3134-6	MALE ELBOW CONNECTOR
15	1	FA7184-4	LATCH AIR VALVE
16	1	FA966-62	24V 8A CHARGER ASSEMBLY
17	1	FA966-8	FUSE HOLDER MOUNTING BRACKET
18	1	FA975	FUSE HOLDER
19	1	FA975-1	350 AMP FUSE
20	1	FA976	DC CONTACTOR
21	1	FA987-2	DC WORKBENCH CABINETTOP WELDMENT
22	1	NP1066	FUSE SIZE NAMEPLATE



CABINET FRONT SUB-ASSEMBLY

ITEM	QTY	PART NO.	DESCRIPTION
1	4	41740	#8-32NC x 1" Lg. SLOTTED PHMS, PLTD
2	4	450957	#8-32 NYLON LOCKNUT
3	1	FA7958-4 KIT	DC DISCONNECT SWITCH
4	1	FA987-10	DC WORKBENCH CABINET FRONT COVER
5	1	NP1057	SL AUTOMATED PUSH BUTTON LABEL
6	1	NP1058	WIRING DIAGRAM NAMEPLATE
7	1	NP470	MOTOR LOCATION WARNING LABEL
8	1	NP585	MULTIPLE POWER SOURCE LABEL
9	1	NP715	NAMEPLATE
10	1	Z150047	DUAL PUSH BUTTON
11	1	Z150048	ILLUMINATED SINGLE PUSH BUTTON



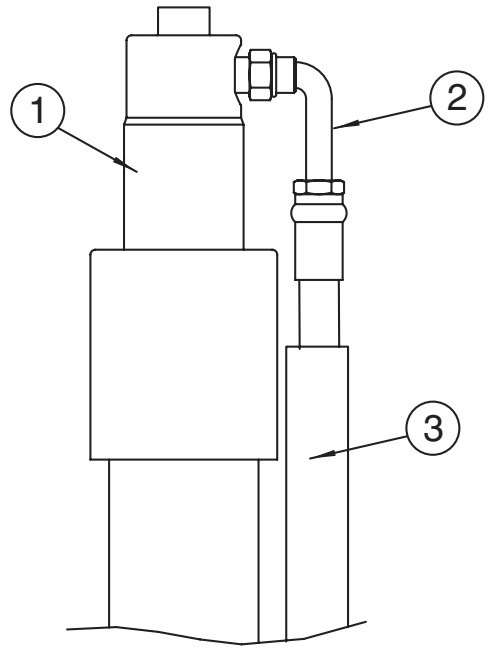


CABINET BACK SUB-ASSEMBLY

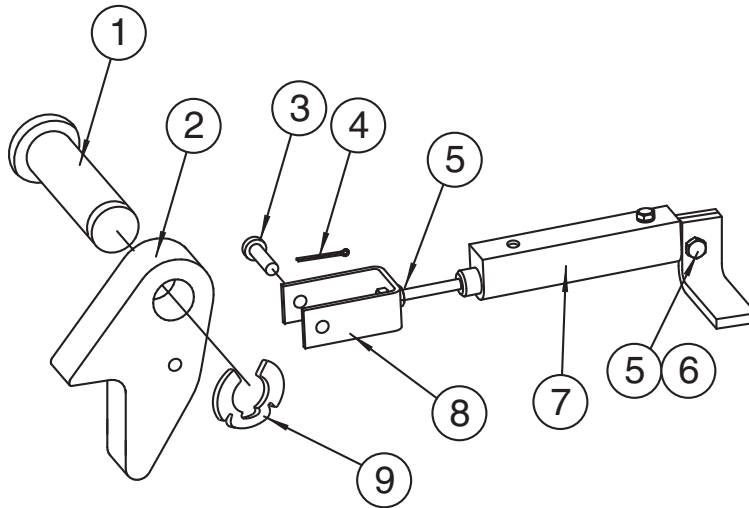
ITEM	QTY	PART NO.	DESCRIPTION
1	1	16016	90° ELBOW; McMASTER-CARR #50785K43 or Eq.
2	2	40638	#6-32NC HEX NYLON INSERT LOCKNUT
3	2	40772	#6 SAE FLAT WASHER
4	1	40920	1/2" SAE FLAT WASHER
5	2	41435	#6 EXT TOOTH LW, PLTD
6	2	41475	#6-32NC x 1" Lg. HEX SHCS
7	2	41628	#4-40 NYLON INSERT LOCKNUT MMC #90633A005
8	2	796443	#4-40 x 1/2 Lg. PHMS, PLTD
9	1	FA2444-23	FEMALE SWIVEL ELBOW
10	1	FA7184-11	IN-LINE REGULATOR - 1/4" NPT
11	1	FA7186-15	PRESSURE SWITCH
12	1	FA7189-5	1/8" NPT BRASS FILTER
13	1	FA7460-3	LDS PRESSURE SWITCH BRACKET
14	1	FA7958-10	7/8" HOLE PLUG
15	1	FA983	CHARGER INTERNAL POWER CORD
16	1	FA987-6	DC WORKBENCH CABINET BACK WELDMENT
17	1	FA998	1/4" NPT MALE TO 1/8" NPT FEMALE ELBOW
18	1	FC5191-6	1/4" TUBE TO 1/4" NPT PUSH CONNECTOR
19	3	FC5341-86	CONNECTOR
20	1	FC5341-90	MALE ELBOW CONNECTOR
21	1	NP692	NAMEPLATE

## CYLINDER DETAIL

ITEM	DESCRIPTION	PART
1	Hydraulic Cylinder	N367
	Shockwave Hydraulic Cylinder	N3152Y
2	Plunger Hose	T140276
3	Hose Support Tube	T140166

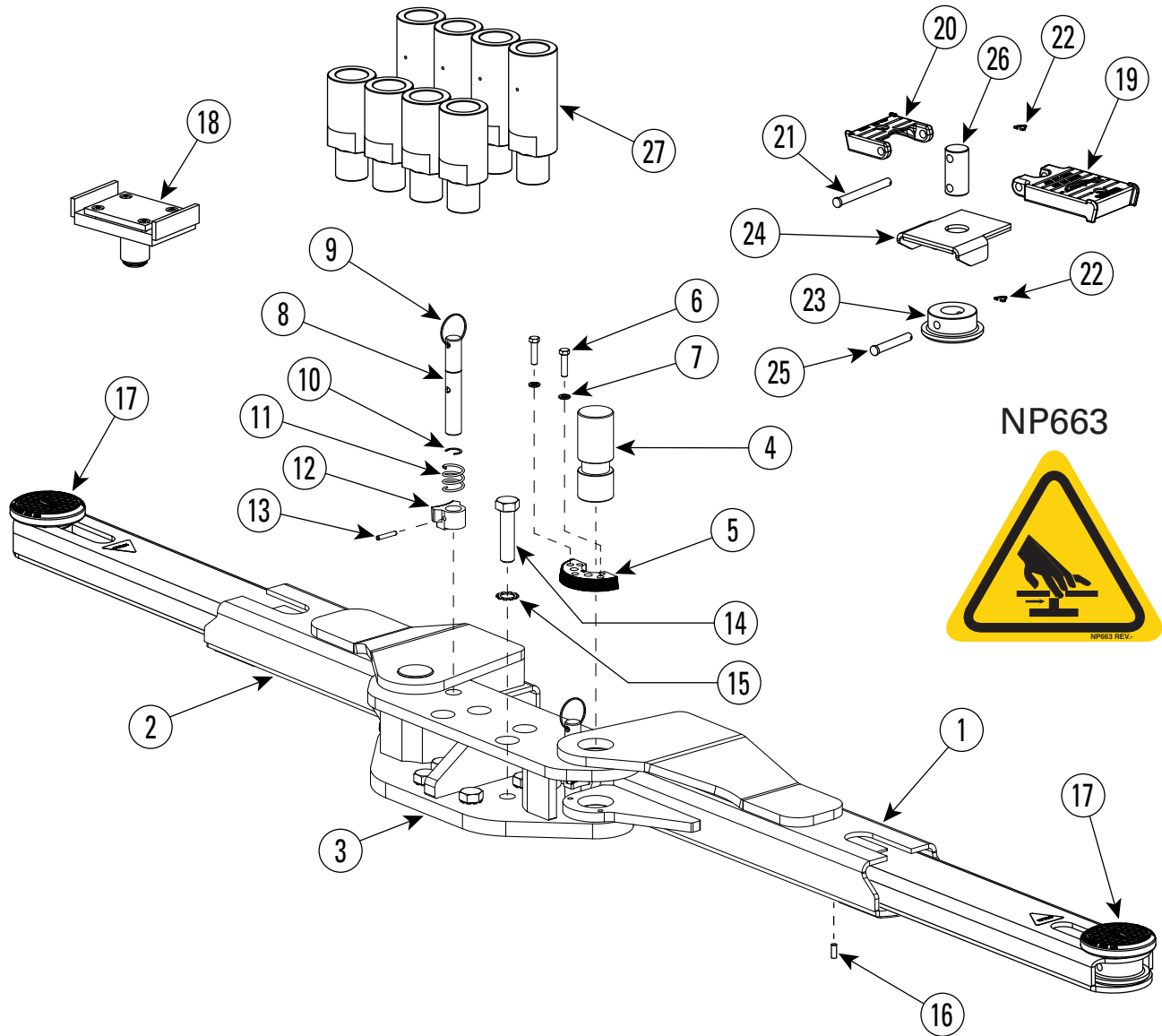


## LOCK DETAIL



ITEM	DESCRIPTION	PART
1	Latch Shaft Weldment	T120318
2	Locking Latch	T130348
3	Latch Clevis Pin, Plated	T140135
4	3/32" x 3/4" Lg. Cotter Pin	41168
5	1/4"-28NF Nylon Insert Locknut, Plated	40611
6	1/4"-28NF x 1-1/4" HHCS, Grade 2	40414
7	Air Cylinder	T140062
8	Clevis	T130349
9	Retaining Ring TRUARC #5304-125	41417

# SLW210 ARM DETAIL 000 SERIES



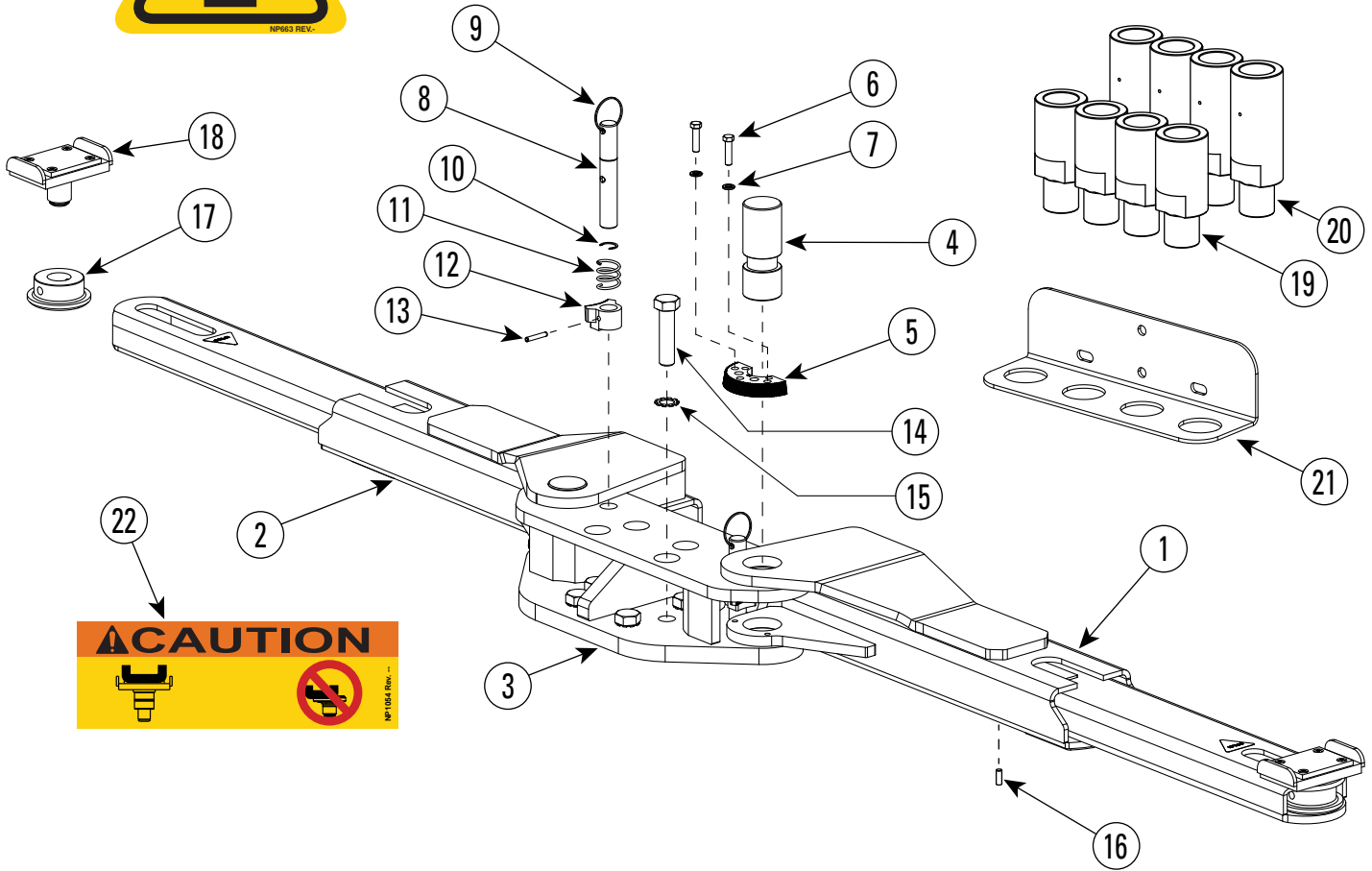
NP663



ITEM	DESCRIPTION	PART	ITEM	DESCRIPTION	PART
1	SLW RH Arm Assembly	T110649	14	7/8"-9NC x 2-1/2" HHCS, Gr. 5, Plated	40489
2	SLW LH Arm Assembly	T110648	15	7/8" External Tooth Lockwasher, Plated	41072
3	SLW Superstructure	T120338	16	1/2"-13NC X 3/4" Set Screw	41746
4	SLW Arm Pin	T130773	17	Low Profile Round RA Adapter	FJ6219
5	Restraint Gear	N2271-1	18	Truck Adapter	T110564
6	3/8"-16NC x 1-1/2" Lg. HHCS, Gr. 5, Plated	40201	19	High Step Adapter	FJ6177
7	3/8" Helical Spring LW, Plated	40818	20	Low Step Adapter	FJ6178
8	Actuator Pin	T130774	21	Adapter Pin	FJ6179
9	Actuator Handle	FJ7985-1	22	3/32" Hog Ring For 1/2" Shaft	FJ671-6
10	Retaining Ring	N119-3	23	Adapter Insert	T120309
11	Arm Restraint Spring	PR201272	24	Load Plate Weldment	FJ6233W
12	Arm Restraint Pawl	N2121	25	Adapter Insert Pin	T130669
13	1/4" x 1-1/2" Lg. Roll Pin	N14427	26	Swivel Pin	T130668
			27	Extension Adapter Kit (Sold Separately)	T100271

# SLW212TRIO ARM DETAIL 000 SERIES

NP663



ITEM	DESCRIPTION	PART	ITEM	DESCRIPTION	PART
1	SLW RH Arm Assembly	T110647	13	1/4" x 1-1/2" Lg. Roll Pin	N14427
2	SLW LH Arm Assembly	T110646	14	7/8"-9NC x 2-1/2" HHCS, Gr. 5, Plated	40489
3	SLW Superstructure	T120335	15	7/8" External Tooth Lockwasher, Plated	41072
4	SLW Arm Pin	T130757	16	1/2"-13NC X 3/4" Set Screw	41746
5	Restraint Gear	N2271-1	17	Adapter Insert	T120309
6	3/8"-16NC x 1-1/2" Lg. HHCS, Gr. 5, Plated	40201	18	Truck Adapter	T110564
7	3/8" Helical Spring LW, Plated	40818	19	3-1/2" Extension	T130660
8	Actuator Pin	T130774	20	5" Extension	T130661
9	Actuator Handle	FJ7985-1	21	Extension Rack	T130683
10	Retaining Ring	N119-3	22	Arm Decal	NP1054
11	Arm Restraint Spring	PR201272			
12	Arm Restraint Pawl	N2121			

### NP370

**SAFETY WARNING LABELS FOR INGROUND LIFTS**

**Lift Owner/User Responsibilities:**

A. This Safety Warning placard SHALL be displayed in a conspicuous location in the lift area.  
 B. Use one of the mounting arrangements illustrated on back of this placard.  
 C. These Safety Warning labels supplement other documents supplied with the lift.  
 D. file certain all lift operators read and understand these labels, operating instructions and other safety related information supplied with the lift.


The message and pictographs shown are general in nature and are not intended to replace the manufacturer's instructions. The manufacturer is responsible for the development and validation of these labels. Provided by the Automotive Lift Institute (ALI) to its members. ©2011 ALI. They are protected by copyright. All rights reserved. NP370

### NP 865 ALI/WLSIA01

**NOTICE**

If attachments, accessories, or configuration modifying components used on this lift are located in the load path and affect operation of the lift, affect the lift electrical listing, or affect intended vehicle accommodation; and if they are not certified for use on this lift, then the certification of this lift shall become null and void. Contact the participant for information pertaining to certified attachments, accessories, or configuration modifying components.

[www.autolift.org](http://www.autolift.org) ©2011 by ALI, Inc. ALI / WLSIA01

### NP588

**IMPORTANT**

Allow 2 seconds between motor starts. Failure to comply may cause motor burnout.  
 Attendez deux secondes entre les démarrages de moteur. Omettre cette étape peut causer la grillage du moteur.

**CAUTION ATTENTION**

To prevent electrical shock, Do Not remove cover. Refer servicing to qualified service personnel.  
 Pour éviter tout choc électrique, ne pas retirer le couvercle. Confiez l'entretien à un personnel qualifié.

**WARNING ADVERTISSEMENT**

Risk of Explosion, DO NOT expose to flammable vapors. Motor should be located at least 460mm (18 inches) above floor.  
 Risque d'explosion, n'exposez pas à des vapeurs inflammables. Moteur doit être situé à au moins 460 mm (18 pouces) au-dessus du sol.

Motor duty cycle is one full lifting operation within a 10 minute period.  
 Example: 45 seconds rise time, 9 minutes 15 seconds rest.  
 Cycle opération du moteur est un plein fonctionnement de levage dans un intervalle de 10 minutes. Exemple: 45 secondes, 9 minutes de temps de montée 15 secondes de repos.

NP588 Rev G

**TYPICAL PLACARD LOCATIONS**

Wall Mounted Lift Controls, Air Supply To Lift, Push Button Controls on Electric Powered Lifts, In-floor Lift Controls: Locate directly on wall or column in lift area near lift controls.


The message and pictographs are general in nature and are not intended to replace the manufacturer's instructions. The manufacturer is responsible for the development and validation of these labels. Provided by the Automotive Lift Institute (ALI) to its members. ©2011 ALI. They are protected by copyright. All rights reserved. NP574

### NP574

**SAFETY INSTRUCTIONS**  
 Read and heed all WARNING, CAUTION and SAFETY INSTRUCTION labels on lift.

**OPERATING INSTRUCTIONS**  
 Only Authorized Personnel Are to Operate Lift. Before operating lift, read Operation & Maintenance Manual and Safety documents supplied with lift.

**CONVENTIONAL LIFT CONTROLS** (Raise Button, Safety Latch Air Release, Lowering Valve Handle) | **Inbay LIFT CONTROLS** (RAISE, LOWER, LOWER TO LOCKS)

**1. BEFORE LOADING:**  
 • Inspect lift to assure it is in good operation condition. See Operation & Maintenance Manual for details.  
**2. LOADING:**  
 • Always Lift vehicle with all four adapters.  
 • Spot vehicle with left front wheel in proper spotting dish position, Fig. 1.  
 • Swing arms under vehicle and position adapters at vehicle manufacturer's recommended lift points, Fig. 2.

**WARNING:** Before attempting to lift pickup trucks or other truck frame vehicles, be sure that:  
 • Vehicle individual axle weight does not exceed 1/2 lift capacity.  
 • Adapters are in secure contact with vehicle manufacturer's recommended lift points.  
 • Vehicle is stable on lift; neither front nor tail heavy.

**3. TO RAISE LIFT:**  
 • Actuate RAISE SWITCH/RAISE button.  
 • Raise vehicle until tires clear floor.  
 • STOP: Check adapters for secure contact with vehicle. Shake car moderately at front or rear bumper.  
 • Continue to raise to desired height ONLY if vehicle is secure on lift. If necessary, lower lift and reposition using vehicle manufacturer's recommended pick-up points.  
**FOR CONVENTIONAL LIFTS:**  
 • Actuate LOWERING VALVE HANDLE to lower lift onto locking latches.  
**FOR INBAY LIFTS:**  
 • Push the LOWER TO LOCKS button to lower lift onto locking latches.  
 • Motor duty cycle is one full lifting operation within a 10 minute period. Example: 45 seconds rise time, 9 minutes 15 second rest.

**4. BEFORE LOWERING LIFT:**  
 • Remove all obstacles from under vehicle and lift.  
 • Assure personnel are not in lift area.

**5. TO LOWER LIFT:**  
 • Remain clear of lift.  
 • Actuate RAISE SWITCH/RAISE button to raise lift off latches.

**FOR CONVENTIONAL LIFTS** (while keeping feet clear):  
 • Actuate SAFETY LATCH AIR RELEASE handle fully and hold.  
 • Actuate LOWERING VALVE HANDLE to lower.  
**FOR INBAY LIFTS** (while keeping feet clear):  
 • Push the LOWER button to lower lift.

**Fig. 1 Typical Wheel Spotting Positions**  
**Front Wheel Drive Vehicles:**  
 Less than 114" (2.9m) wheelbase | Larger than 114" (2.9m) wheelbase  
**Rear Wheel and 4 Wheel Drive Vehicles:**  
 Less than 108" (2.7m) wheelbase | 108"-127" (2.7m-3.2m) wheelbase | Larger than 127" (3.2m) wheelbase

**Fig. 2 Typical Lift Points**  
 Pickup Truck, Utilized Body, Perimeter Frame, Stub Frame

**NOTE:** Some vehicles may have the manufacturer's Service Garage Lift Point locations identified by triangle shape marks on it's undercarriage (reference ANSI/SAE J2194-1992). If the specific vehicle lift points are not identified, refer to the vehicle manufacturer's service manual or the "Typical Lifting Points" illustrated herein. ALWAYS follow the operating instructions supplied with the lift.

Rotary Lift Madison, IN 47250 (800)445-5438 | © October 2014 by Vehicle Service Group. All rights reserved. NP574 C08467.8 | Rev. E 10/22/2014

## Notes





**Rotary World Headquarters**

3005 Highland Parkway, Suite 200  
Downers Grove, Illinois 60515, USA  
[www.vsgdover.com](http://www.vsgdover.com)  
800.640.5438

**North / South America Contact Information**

**Sales:**

1.812.273.1622 / 800.445.5438  
[insidesales@vsgdover.com](mailto:insidesales@vsgdover.com)

**Tech. Support:**

800.445.5438  
[technicalsupport@rotarylift.com](mailto:technicalsupport@rotarylift.com)

**Government Sales:**

800.445.5438 X5655  
[rotarylift.com/Government-Purchasing-Assistance/](http://rotarylift.com/Government-Purchasing-Assistance/)

**Additional information at** [rotarylift.com](http://rotarylift.com)

**Global Contact Information**

Australasia: +60.3.5192.5910  
Brazil: +55.11.4534.1995  
Canada: 1.905.812.9920  
European Headquarters/Germany: +49.771.9233.0  
Latin America/Caribbean: 1.812.273.1622  
Middle East/Northern Africa: +49.771.9233.0  
Southern Africa: 1.812.273.1622  
United Kingdom: +44.178.747.7711

